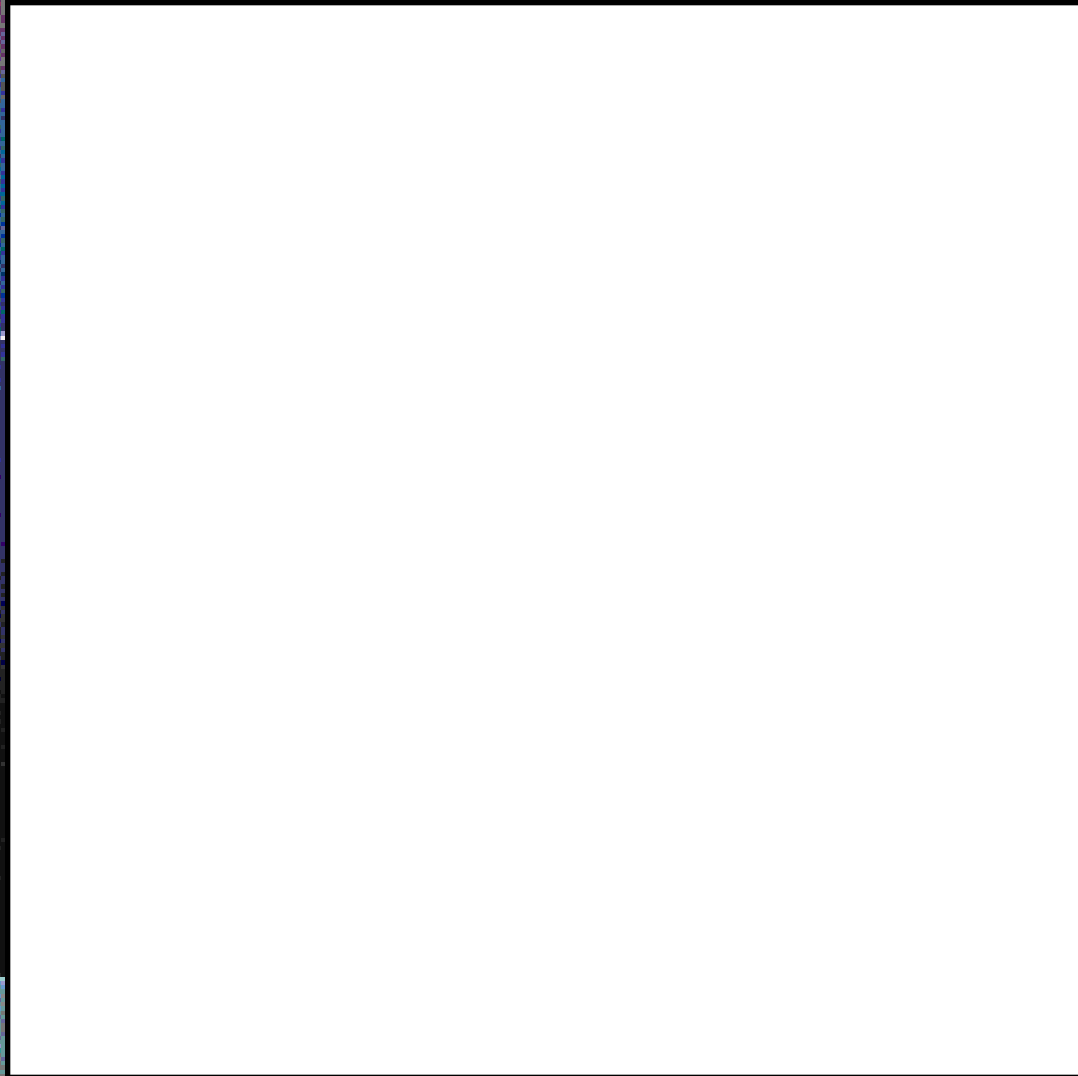


Clean Me Up, Scotty



Model CL10

ACCESSORIES MODEL: CL10

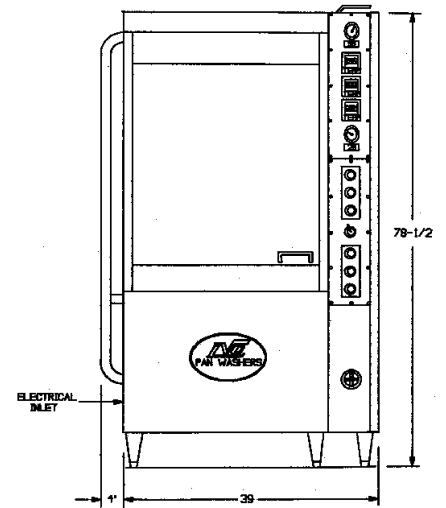
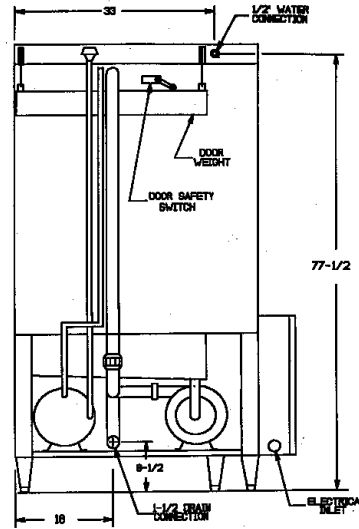
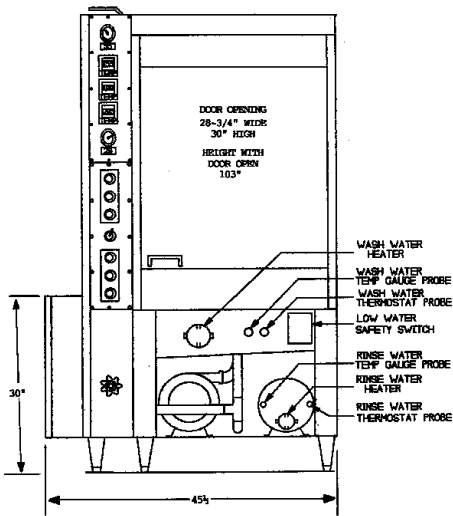
- * Power venting - 100 CFM
Tjernlund fan or 700 CFM
American Fan
- * Racks - Bun pan, cake pan, or
utensil basket
- * Automatic Fill



LVO MANUFACTURING INC.

P.O. Box 188, 808 N 2nd Avenue E, Rock Rapids Iowa 51246

Phone: 712/472-3734 or 712/472-3735, Toll Free 1-800-346-5749, Fax 712-472-2203



Model CL10

Specifications

Wash Cap: 10 pans, utensils or 140 quart bowl

Pump: 7.5 H.P. - 208, 240, 480V, 60 cycle, 1 phase or 3 phase - recirculates app. 140 G.M.P. - 50 - 60 PSI at the nozzles

Timers: Wash, delay, rinse - all adjustable

Electrical Components: U.L. approved

Wash Tank: 25 gal. cap. - electric, steam or gas

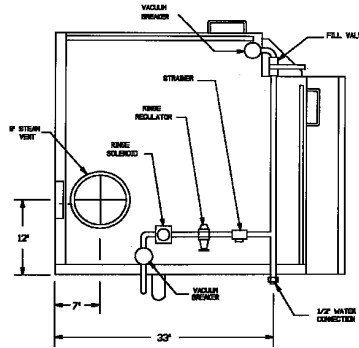
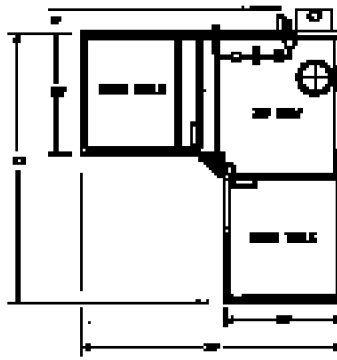
Construction: 12 and 14 GA stainless steel

Rinse Tank: NSF approved: Stainless steel with 9 KW

electric booster heater to boost 120° water to 180°-195°

sanitizing rinse water.

Model CL10 Electric



Total Amperage

	208V	240V	480V
Electric	77.6	68.4	35.0
Gas or Steam	49.8	44.2	23.0

Gas Rating 36,000 BTU

Rinse Tank Cap. - 7 gal.

35 sec. rinse @ 20 psi

4.5 gal/cycle

Model CL10 Gas

